

The background of the image is a complex industrial scene, likely a refinery or chemical plant. It features a dense network of large, dark-colored pipes that run horizontally and vertically across the frame. Various mechanical components are visible, including several circular pressure gauges mounted on a central vertical pipe, and numerous valves with handwheels. The lighting is dramatic, with strong highlights and deep shadows, creating a sense of depth and scale. The overall color palette is dominated by dark blues, greys, and metallic tones, with some warmer highlights from industrial lighting.

Montajes Mecánicos y
Puestas en Marcha J.R.

MMYPEM



INDEX.

CORPORATE INFORMATION.

- ABOUT US
- ORGANIZATION CHART
- DELEGATIONS
- CORPORATE RESPONSIBILITY

SERVICES.

- COMMISSIONING
- MECHANICAL ASSEMBLY
- MAINTENANCE
- SUPERVISION
- TECHNICAL ADVICE

REFERENCES.

- PROJECTS
- CLIENTS

CONTACT.

The background of the slide is a grayscale photograph of a large industrial refinery. It features a complex network of pipes, metal walkways, and several tall distillation columns. In the bottom right corner, two workers wearing blue uniforms and white hard hats are partially visible, looking towards the left. The text "CORPORATE INFORMATION." is overlaid in white, bold, sans-serif font on the upper left side of the image. A thin white horizontal line is positioned below the text, and a white right-angled triangle is located just below the line on the left side.

CORPORATE INFORMATION.

MMYPEM

ABOUT US

Montajes Mecánicos y Puestas en Marcha JR, SLU., was established on 5 January 1999 in A Coruña and began its activity in February of the same year.

MMYPEM J.R. S.L.U. is a company set up by professional partners with wide, extensive and proven experience in the field of industrial and precision machining, industrial assembly, fluid piping systems, supervision of assembly and commissioning of industrial installations, especially in the field of energy.

As a result of their professional activities before establishing the company, the founders perceived that there existed serious potential in the Spanish market to develop their own project, employing the high level of specialisation attained from their previous professional experience.

We would stress the high level of professionalism and experience of our personnel, as it is the basis on which our company is founded, together with the excellent relationship we have with our clients, whose confidence is won year after year through our efficient working practices and guarantee of work done well.

From its creation in 1999 until 2002, MMYPEM J.R. S.L.U. remained at the introduction into the market stage, where it became established and found its place among competitors, managing to attract prestigious clients and as a result, seeing the possibility to increase its volume of work.

During the year 2003, it gained a higher market share and took on more staff. The highest rate of growth was from 2004 onwards. The year 2014 passed with an average of 101 workers, and it is estimated that it will further increase this figure, because MMYPEM J.R. S.L.U. continues its expansion phase taking guaranteed workload for the next few years by all the national and international geography.

We must also indicate that there is an external market outside of our borders that demand our services. We have begun to exploit yet, experiencing a gradual growth, prevail aspects such as safety in the work and the professionalism of the staff, which are achieved after a good training from that begins to work with us for the first time.

In conclusion, the future seems to be very favourable for a company like ours (barriers for similar companies to enter the market are high given the difficulties to find qualified and experienced staff and the high cost of machinery and equipment).

Finally, we would like to emphasize that we are certain that the favourable reception we have achieved is due to our capacity to successfully meet new challenges, and to the company's self-imposed commitment and guarantee to meet the objectives that our clients demand for their projects.



ORGANIZATION CHART.

BOARD OF DIRECTORS

Pablo Riveira

Jose Ramón Riveira

Jesús Pazos

GENERAL MANAGER

Pedro Antonio Fernández

PROJECTS

**CONSTRUCTION
DIVISION**

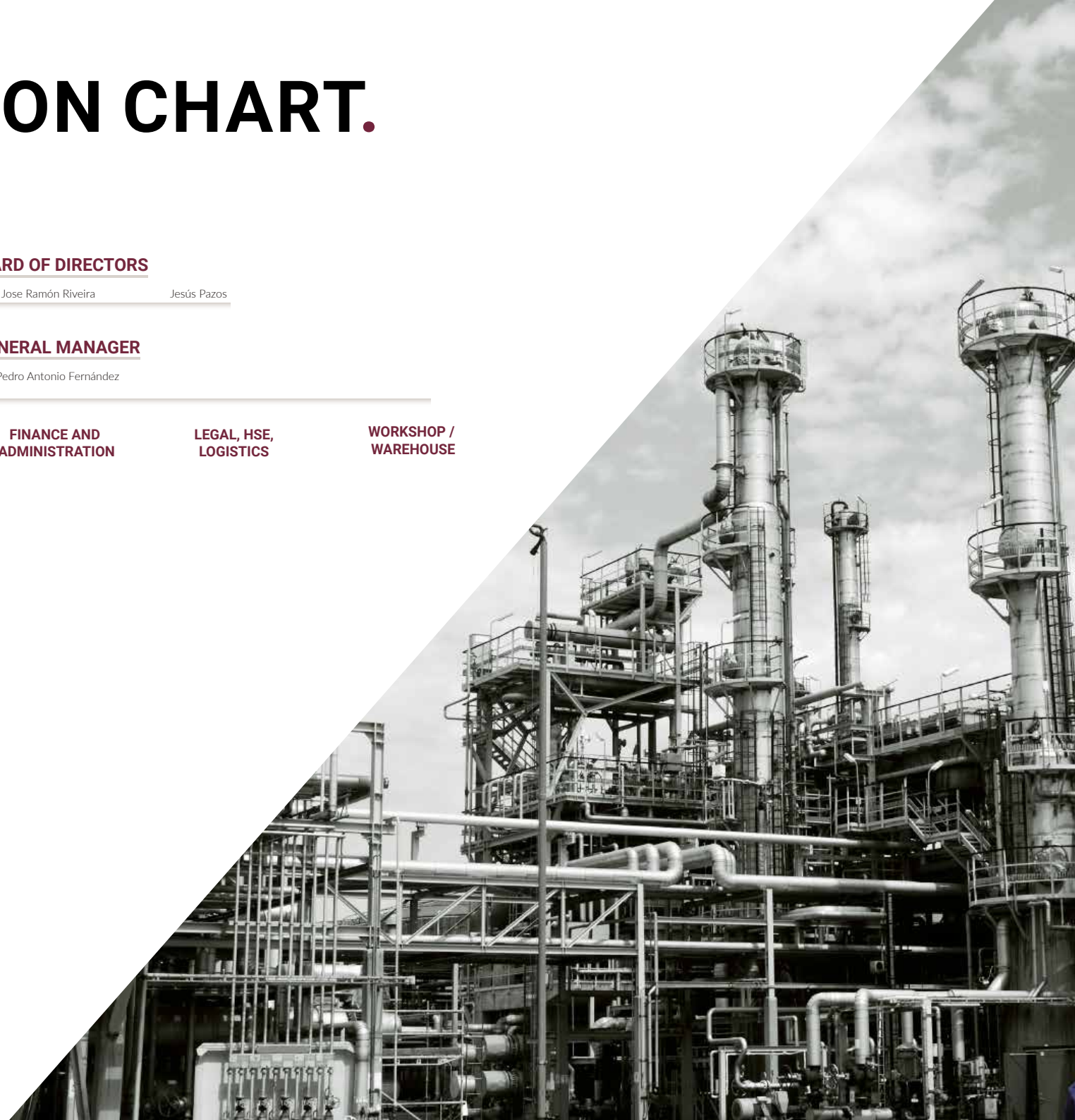
**COMMISSIONING
DIVISION**

HR AND LABOUR

FINANCE AND ADMINISTRATION

LEGAL, HSE, LOGISTICS

WORKSHOP / WAREHOUSE



BRANCHES.



RESPONSIBILITY.

QUALITY

Our main objective is to increase competitiveness and the quality of our projects. We work every day looking for continuous improvement in the management of all MMYPEM's projects and activities.

Our principles are:

The entire satisfaction of our clients. MMYPEM analyses and develops each project in a personalized way carrying out all the necessary services to meet client expectations.

We have a team of highly experienced professionals and we care about continuous training so that we can perform our services optimally.

We strive for constant development and growth.

MMYPEM complies with the most stringent quality standards and applies the procedures of the Quality Management System according to ISO 9001, certified by Bureau Veritas.

ENVIRONMENT

For MMYPEM the environmental dimension is the basis of sustainability. Sustainability requires environmental excellence and social responsibility. In 2017 MMYPEM concluded the adaptation of its Environmental Management System to ISO 14001: 2015 standard.

We are aware that our responsibilities go beyond legal obligations, so we cannot stay out of the problems facing society.

From the Steering Committee, the highest management body of the company, business decisions and actions are taken with a preventive nature to respect the environment in which we develop our activity.

SAFETY

One of our main goals is to ensure the safety of our employees, as well as that of all the members of the working group.

Mmypem works every day to reduce accidents at work and our statistics confirm that we meet all our requirements.

LABORATORY

The equipment measures are a fundamental part of our company. In order to optimize the use of our equipment, we need to calibrate / verify them by certain standards. To this end, we have in our facilities a calibration bench for torque wrenches up to 3000 N M.

In turn, we have externally calibrated standard equipment such as, clamp meters, comparator clocks and standard bays, which are aimed at conducting checkings on other equipment. In order to be able to provide our services with the greatest diligence, we work closely with external laboratories to calibrate various equipment such as, vibration meters, thermometers, tachometers, gas-meters for confined areas, among others.



The background is a grayscale photograph of a large industrial refinery. It features a complex network of pipes, metal walkways, and several tall distillation columns. In the bottom right corner, two workers wearing blue uniforms and white hard hats are partially visible, looking towards the left. The word "SERVICES." is written in white, bold, sans-serif capital letters, followed by a red period. A thin white horizontal line is positioned below the text, and a white right-angled triangle is located to the left of the line.

SERVICES.

MMYDEM

COMMISSIONING.

MMYPEM's path in the commissioning field dates back to its inception. Thus, due to its wide experience in rendering such service at both, national and international level and, consequently, due to its consolidation in the market as a result of its permanent involvement in large projects, MMYPEM executes in a structured, effective and documented manner, the set of actions required to achieve a smooth start up of any type of plant aimed at accelerating its entry into production in an efficiently and safely manner, both in terms of equipment integrity, as well as with regards to people and production.

For that purpose, MMYPEM is responsible for verifying that all the installations operate according to the relevant design conditions by gradually put them, step by step, into operation, and in a controlled, safe and reliable manner until they reach the normal operating conditions and the production have been stabilized, by carrying out the necessary performance tests aimed at verifying the compliance with the guaranteed parameters.

COMPREHENSIVE

Our extensive experience allows us to offer turn-key commissioning services to our clients, both regarding the I&C, Mechanical and Operation part, as well as the relevant Electrical one.

MECHANICAL

Our proven track record allows us to carry out the part concerning to the preparation of equipment and systems, including the engine and pumps alignment, as well as the part regarding the lubricant filling and the preparation of the aforesaid for their chemical washing and blowing.

OPERATION

We have wide experience in both, the field operation phase, which mainly consists in conducting a review aimed at ensuring the correct operation of all equipment and systems, as well as the part relating to control panel operation, whose purpose is none other than the correct management of all the relevant equipments located in the control room.

SOLAR FIELD

Among our activities, it shall be included the Solar Field filling through the HTF system, as well as the start up of the recirculation pump system concerning the Field.

E.S.R./PROJECT MANAGEMENT

Our extensive experience as well as our high skilled employees enable us to deliver project management services during the commissioning stage, carrying out the planning, validation and monitoring throughout the different stages of each project, as well as carrying out the design of the relevant processes and working methods by optimizing the resources and associated costs.

SALT MELTING

We carry out salt melting activities on solar thermal plants, including the reception of the material, handling, as well as management and control of the melting process.

CHEMICAL

Our wide experience in commissioning allows us to fully cover all the activities related to the chemical part in the plant, included those related to the water-steam cycle, sampling and related. Among our services, it is noteworthy to mention the operation stage on Water Treatment Plants and Effluent Treatment Plants.

COMBINED CYCLE.

WORKS

C.T.C.C. Hadera

Central Combined Cycle - 2018

Contractor: SERIDOM, Servicios Integrados
Customer: Advanced Integrated Energy (AIE)

C.T.C.C. Aconcagua

Central Combined Cycle - 2017

Contractor: Duro Felguera S.A.
Customer: ENAP

C.T.C.C. Vuelta de Obligado

Central Combined Cycle - 2017

Contractor: Duro Felguera S.A.
Customer: Central Vuelta Obligado S.A.

C.T.C.C. Dead Sea

Central Combined Cycle - 2016

E.S.R./Project Management - Mechanical
Contractor: UTE Dead Sea / ICL Group
Customer: Dead Sea Works

C.C.T.C. Chilca

Central Combined Cycle - 2016

E.S.R./Project Management - Mechanical - Chemical
Contractor: New Chilca UTE (Duro Felguera - DF Mompresa)
Customer: Enesur

CTCC of Termocentro

Central Combined Cycle - 2016

E.S.R./Project Management - Mechanical
Contractor: UTE Termocentro (Duro Felguera - DF Mompresa)
Customer: EDC

C.T.C.C. Dead Sea

Central Combined Cycle - 2016

E.S.R./Project Management - Mechanical
Contractor: Abeinsa EPC
Customer: Dead Sea Works

C.T.C.C. Recka

Central Combined Cycle - 2015

E.S.R./Project Management - Mechanical
Contractor: Cobra Perú
Customer: Minera Cerro Verde

C.T.C.C. Reserva Fría ETEN

Central Combined Cycle - 2015

E.S.R./Project Management - Mechanical
Contractor: Cobra Perú - Enersa
Customer: ETEN

C.T.C.C. Wlocklawek

Central Combined Cycle - 2015

E.S.R./Project Management - Mechanical
Contractor: General Electric y SNC Lavalin
Customer: PKN ORLEN

C.T.C.C. Parnaiba Phase 2

Central Combined Cycle - 2014

E.S.R./Project Management - Mechanical
Contractor: INITEC
Customer: ENEVA

CTCC Great Island Co

Central Combined Cycle - 2013

E.S.R./Project Management - Mechanical - Chemical
Contractor: UTE Dragados-Cobra-Initec
Customer: SSE

C.C.G.T. Bremen

Central Combined Cycle - 2013

E.S.R./Project Management - Mechanical
Contractor: GE Wind Energy
Customer: Erzeugung GmbH Co.

C.T.C.C. Parnaiba Phase 1

Central Combined Cycle - 2012

E.S.R./Project Management - Mechanical
Contractor: Duro Felguera
Customer: UTE Parnaiba Geração de Energia, S.A.

C.C.G.T. Lithuania

Central Combined Cycle - 2011

Mechanical
Contractor: Iberdrola
Customer: Lietuvos Energija

CCGT Moerdijk

Central Combined Cycle - 2011

Mechanical
Contractor: Técnicas Reunidas, S.A.
Customer: ESSENT

C.C. Pego

Central Combined Cycle - 2010

Mechanical
Contractor: Siemens S.A.
Customer: EDP

C.T.C.C. Granadilla 2ª Fase

Central Combined Cycle - 2010

Mechanical
Contractor: Técnica Reunidas S.A.
Customer: Endesa S.A.

COMBINED CYCLE.

WORKS

C.T.C.C. Port de Barcelona

Central Combined Cycle - 2009

Mechanical

Contractor: Técnicas Reunidas

Customer: Gas Natural

CC LARES

Central Combined Cycle - 2009

Mechanical

Contractor: COBRA

Customer: EDP

C.T.C.C. Besós V

Central Combined Cycle - 2009

Mechanical

Contractor: Técnicas Reunidas

Customer: Endesa S.A.

CC MONTOIR

Central Combined Cycle - 2009

Mechanical

Contractor: IPROCEL

Customer: SPEMC.C. Riga TEC-1

C.C. Riga TEC-1

Central Combined Cycle - 2008

Mechanical

Contractor: Miprom Energía

Customer: Latvenegro AS

C.C. Escatrón

Central Combined Cycle - 2008

Mechanical

Contractor: Técnicas Reunidas

Customer: Global 3

C.T.C.C. As Pontes

Central Combined Cycle - 2007

Mechanical

Contractor: OPEMASA

Customer: Endesa S.A.

C.T.C.C. Plana del Vent

Central Combined Cycle - 2007

Mechanical

Contractor: UTE Técnicas Reunidas-Ferrovial Agroman

Customer: Gas Natural

C.C.C. Sabón

Central Combined Cycle - 2007

Mechanical

Contractor: Cobra

Customer: Gas Natural - Unión Fenosa

C.T.C.C. Aes Cartagena

Central Combined Cycle - 2006

Mechanical

Contractor: MIPROM ENERGIA

Customer: AES

C.T.C.C.Sagunto

Central Combined Cycle - 2006

Mechanical

Contractor: Siemens S.A

Customer: Gas Natural - Unión Fenosa

C.T.C.C. Boroa

Central Combined Cycle - 2005

Mechanical

Contractor: UTE Boroa (Cobra-Sener)

Customer: Vizcaya Energía ESBI

C.T.C.C. Cristóbal Colón

Central Combined Cycle - 2005

Mechanical

Contractor: MIPROM ENERGIA

Customer: Endesa S.A.

C.T.C.C. Granadilla 1ª Fase

Central Combined Cycle - 2005

Mechanical

Contractor: Técnica Reunidas S.A.

Customer: Endesa S.A.

C.T.C.C. Aceca

Central Combined Cycle - 2005

Mechanical

Contractor: Ute Cobra-Sener

Customer: Gas Natural -Unión Fenosa

C.T.C.C. Castelnou

Central Combined Cycle - 2005

Mechanical

Contractor: MIPROM ENERGIA

Customer: Electrabel

C.T.C.C. Palos de la Frontera

Central Combined Cycle - 2004

Mechanical

Contractor: Siemens, S.A.

Customer: Gas Natural - Unión Fenosa

C.T.C.C. Campo Gibraltar Gr. X y XI

Central Combined Cycle - 2004

Mechanical

Contractor: Siemens S.A.

Customer: N.G.S.

COMBINED CYCLE.

WORKS

C.T.C.C. Arrúbal

Central Combined Cycle - 2004

Mechanical

Contractor: Siemens S.A.

Customer: Gas Natural

C.T.C.C. Santurtzi

Central Combined Cycle - 2003

Mechanical

Contractor: Ute Santurtzi (Cobra-Técnicas Reunidas)

Customer: Iberdrola

C.T.C.C. Iqua

Central Combined Cycle - 2002

Mechanical

Contractor: Técnica Reunidas S.A.

Customer: Endesa S.A.

C.T.C.C. San Roque

Central Combined Cycle - 2002

Mechanical

Contractor: Duro Felguera

Customer: Endesa S.A.C.C. Riga TEC-1

C.C. Son Reus 2ª Fase

Central Combined Cycle - 2001

Mechanical

Contractor: Duro Felguera

Customer: GESA-Endesa S.A.

C.C. Son Reus 1ª Fase

Central Combined Cycle - 2000

Mechanical - Operations

Contractor: Endesa, S.A.

Customer: GESA-Endesa S.A.



BIODIESEL.

WORKS

Biodiesel Plant of Ferrol

Biodiesel Plants - 2009

Mechanical

Contractor: Isolux Corsán

Customer: Infinita Renovables

Biodiesel Plant of Castellón

Biodiesel Plants - 2008

Mechanical

Contractor: Isolux Corsán

Customer: Infinita Renovables

Biodiesel Plant of Cuenca

Biodiesel Plants - 2007

Mechanical

Contractor: Técnicas Reunidas

Customer: Biocombustibles de Cuenca, S.A.



BIOMASS.

WORKS

Biomass Cubillos del Sil

Biomass Plant - 2019

Contractor: Acciona Industrial SA

Customer: Fuerzas energéticas del sur de Europa I, SL

Biomass Curtis-Teixeiro

Biomass Plant - 2019

Contractor: UTE Imasa-Acciona Industrial

Customer: Greenalia Biomass Power Curtis Teixeira S.L.U.

Biomass Fundão

Biomass Plant - 2019

Contractor: Elecnor SA

Customer: CBF Central do Biomasa de Fundão

Biomass Viseu

Biomass Plant - 2019

Contractor: Elecnor SA

Customer: CBV Central do Biomasa do Viseu

Biomass Huelva

Biomass Plant - 2012

Mechanical

Contractor: Ecolaire España, S.A.

Customer: ENCE



THERMAL POWER PLANT.

WORKS

C.D. Llanos Blancos

Thermal Power Plant - 2013

Mechanical

Contractor: Qatro

Customer: Endesa, S.A.

Desulfuración de C.T. Compostilla

Thermal Power Plant - 2008

Mechanical

Contractor: Duro Felguera

Customer: Endesa S.A.

Desulfuración de C.T. Velilla

Thermal Power Plant - 2008

Mechanical

Contractor: Duro Felguera

Customer: Iberdrola

Group XI C.D. Punta Grande

Thermal Power Plant - 2007

Mechanical

Contractor: UTE Técnicas Reunidas-Duro Felguera

Customer: Unelco-Endesa S.A.

Group XI C.D. de Ceuta

Thermal Power Plant - 2007

Mechanical

Contractor: UTE Técnicas Reunidas- Duro Felguera

Customer: Endesa, S.A.

Desulfuración de C.T. Sines

Thermal Power Plant - 2007

Mechanical

Contractor: Cobra

Customer: EDP

Group XIX & XX C.D. Ibiza

Thermal Power Plant - 2007

Mechanical

Contractor: MASA

Customer: GESA-Endesa S.A.

Group XII y XIII C.D. de Melilla

Thermal Power Plant - 2006

Mechanical

Contractor: Técnicas Reunidas S.A.

Customer: Endesa S.A.

Group XIV y XV C.D. Los Guinchos

Thermal Power Plant - 2006

Mechanical

Contractor: Maessa

Customer: Unelco-Endesa, S.A.

Group IX y X C.D. Punta Grande

Thermal Power Plant - 2006

Mechanical

Contractor: UTE Técnicas Reunidas-Duro Felguera

Customer: Unelco-Endesa S.A.

Group VIII y IX C.D. Las Salinas

Thermal Power Plant - 2005

Mechanical

Contractor: Caldererías Indálicas S.L.

Customer: Unelco- Endesa S.A.

Group VII C.D. Las Salinas

Thermal Power Plant - 2004

Mechanical

Contractor: Caldererías Indálicas S.L.

Customer: Unelco- Endesa S.A.

Group XIII C.D. Los Guinchos

Thermal Power Plant - 2004

Mechanical

Contractor: Maessa

Customer: Unelco-Endesa, S.A.

Group X y XI C.D. de Melilla

Thermal Power Plant - 2003

Mechanical

Contractor: Técnicas Reunidas S.A.

Customer: Endesa S.A.

Group VII y VIII C.D. Punta Grande

Thermal Power Plant - 2002

Mechanical

Contractor: UTE Técnicas Reunidas-Duro Felguera

Customer: Unelco-Endesa S.A.

Desulfurization C.T.L.A. Carboneras Group II.

Thermal Power Plant - 2002

Mechanical

Contractor: Endesa U.P.O.M.

Customer: Endesa S.A.

Group IX y X C.D. de Ceuta.

Thermal Power Plant - 2001

Mechanical

Contractor: UTE Técnicas Reunidas- Duro Felguera

Customer: Endesa, S.A.

Desulfuración de C.T. Andorra

Thermal Power Plant - 1999

Mechanical

Contractor: Endesa U.P.O.M.

Customer: Endesa S.A.

COMMISSIONING.

REGASIFICATION.

WORKS

Regasification plant of Reganosa

Central Regasification - 2007

Mechanical

Contractor: Gas Engineering

Customer: Reganosa

Regasification plant of Sagunto

Central Regasification - 2006

Mechanical

Contractor: Regasagunto UTE

Customer: Saggas



SOLAR THERMAL PLANT.

WORKS

CTS Cerro Dominador

Solar Thermal Plant - 2019

Contractor: Constructor Atacama CSP Chile SpA

Customer: Cerro Dominador CSP, SA

C.T.S. Ouarzazate Noor3

Solar Thermal Plant - 2018

Salts Melting

Customer: SENER

C.T.S. Ashalim. Plot B

Solar Thermal Plant - 2017

Commissioning Plot A

Customer: TSK Group

C.T.S. Ashalim. Plot A

Solar Thermal Plant - 2017

Commissioning Plot B

Customer: General Electric

C.T.S. Xina Solar One

Solar Thermal Plant - 2016

Salts Melting - Operations (2017)

Contractor: Abeinsa

Customer: Abengoa - IDC - PIC- Kaxu Community Trust

CTS Bokpoort

Solar Thermal Plant - 2015

Mechanical

Contractor: UTE SENER-ACCIONA-TSK

Customer: ACWA Power

CTS Ouarzazate

Solar Thermal Plant - 2015

Mechanical - Operations - Salts Melting

Contractor: UTE OUARZAZATE SOLAR (SENER-TSK-ACCIONA)

Customer: MASEN

CTS Khi Solar One

Solar Thermal Plant - 2014

Mechanical - Operations - Chemical

Contractor: Abeinsa EPC

Customer: Abengoa - IDC - KHI Community Trust

CTS Kaxu Solar One

Solar Thermal Plant - 2014

E.S.R./Project Management - Mechanical - Chemical

Contractor: Abeinsa EPC

Customer: Abengoa - IDC - Kaxu Community Trust

CTS Villena ENESTAR

Solar Thermal Plant - 2013

Mechanical

Contractor: FCC – SERIDOM

Customer: UTE Termosolar Villena (FCC-Mitsui)

CTS Arenales

Solar Thermal Plant - 2013

E.S.R./Project Management - Mechanical - Chemical

Contractor: Ecolaire España, S.L.

Customer: Arenales Solar PS (OHL-Solar Millenium- RREEF Infrastructure)

CTS Orellana la Vieja

Solar Thermal Plant - 2012

Comprehensive - E.S.R./Project Management

Contractor: Qatro

Customer: Acciona

CTS Morón de la Frontera

Solar Thermal Plant - 2012

E.S.R./Project Management - Mechanical - Chemical

Contractor: UTE Acciona - Seridom

Customer: Ibereólica

CTS Olivenza 1

Solar Thermal Plant - 2012

E.S.R./Project Management - Mechanical - Chemical

Contractor: UTE Olivenza (Acciona Infraestructuras/Ingeniería - Seridom)

Customer: Ibereólica

CTS Sol Guzmán

Solar Thermal Plant - 2012

Mechanical

Contractor: UTE Termosolar Guzmán (FCC-Seridom-Abantia)

Customer: Guzmán Energía

CTS La Africana

Solar Thermal Plant - 2012

Mechanical

Contractor: UTE Africasolar (TSK-Electricidad SA Ortiz-Proyectos SA Ortiz)

Customer: UTE Africasolar

CTS Andasol 3

Solar Thermal Plant - 2011

E.S.R./Project Management - Mechanical

Contractor: UTE Andasol 3 (Ferrostaal - Duro Felguera)

Customer: Marquesado Solar

CTS Puerto Errado 2

Solar Thermal Plant - 2011

Mechanical

Contractor: UTE Errado Solar 2 (TSK – OHL Industrial)

Customer: Tubo Sol PE2 S.L

CTS Astexol 2

Solar Thermal Plant - 2011

Mechanical

Contractor: IPROCEL

Customer: ELECNOR S.A.

SOLAR THERMAL PLANT.

WORKS

CTS La Dehesa

Solar Thermal Plant - 2010

Mechanical

Contractor: Samcasol (TSK-MAESSA)

Customer: Samcasol

CTS La Florida

Solar Thermal Plant - 2010

Mechanical - Operations

Contractor: Samcasol 1 (TSK-MAESSA)

Customer: SAMCA

C.T.S. Majadas

Solar Thermal Plant - 2010

E.S.R./Project Management - Mechanical - Chemical

Contractor: Seridom

Customer: Acciona Energía

CTS Extresol 1

Solar Thermal Plant - 2009

Mechanical - Operations - Salts Melting

Contractor: UTE Cobra-Sener

Customer: EYRA

CTS La Risca Alvarado I y II

Solar Thermal Plant - 2009

Mechanical

Contractor: Seridom

Customer: Acciona

CTS Andasol 2

Solar Thermal Plant - 2008

Mechanical - Operations - Salts Melting

Contractor: UTE Cobra-Sener

Customer: EYRA

CTS Andasol 1

Solar Thermal Plant - 2007

Mechanical - Operations - Salts Melting

Contractor: UTE Cobra-Sener

Customer: EYRA



DIESEL PLANTS.

WORKS

C.N. Mochovce

Nuclear Power Plant - 2018

Mechanical

Contractor: Slovenské Elektrárne, a.s.

Customer: Slovenské Elektrárne, a.s.

C.D. Ceuta.

Diesel Plant -

Commissioning diesel engine Group IX & X

Contractor: Ute Técnicas Reunidas- Duro Felguera.

Customer: Endesa Generación.

C.D. Punta Grande (Lanzarote).

Diesel Plant -

Commissioning diesel engine Group VII, VIII, IX, X & XI

Contractor: Ute Técnicas Reunidas-Duro Felguera.

Customer: Unelco-Endesa

C.D. de Melilla.

Diesel Plant -

Commissioning diesel engine Group X, XI, XII & XIII

Contractor: Técnicas Reunidas S.A.

Customer: Endesa Generación.

C.D. Los Guinchos (La Palma).

Diesel Plant -

Commissioning diesel engine Group XIII, XIV & XV

Contractor: Maessa.

Customer: Unelco-Endesa.

C.D. Las Salinas (Fuerteventura).

Diesel Plant -

Commissioning diesel engine Group VII, VIII & IX

Contractor: Caldererías Indálicas S.L.

Customer: Unelco- Endes

C.D. Ibiza (Balears)

Diesel Plant -

Commissioning diesel engine Group XIX & XX

Contractor: MASA

Customer: GESA-ENDESA.

C.D. Los Llanos (El Hierro)

Diesel Plant -

Commissioning motor diesel

Contractor: Endesa Generación

Customer: Endesa Generación



NUCLEAR POWER PLANT.

WORKS

C.N. Mochovce

Nuclear Power Plant - 2018

Mechanical

Contractor: Slovenské Elektrárne, a.s.

Customer: Slovenské Elektrárne, a.s.

COMMISSIONING.



COMMISSIONING.

PLANTS CHEMICAL-FOOD.

WORKS

Planta Química-Alimentaria de Burgos

Chemical-Food Plant 2018

Commissioning

Constructor: SERIDOM Servicios Integrados Idom, SAU.

Customer: ADISSEO.



MECHANICAL ASSEMBLY.

MMYPEM responds to the growing needs of the market in relation to the industrial assembly of any type of plant, by using a professional and specialized team and approved equipment for such purpose. We have experience with pipes assembly, bearing, valves, blowing tree, as well as structural elements and extensive experience on the assembly of main equipment such as gas turbines, steam turbines, hydraulic turbines, generators, high pressure pumps, base plates of equipment, as well as all kind of auxiliary equipment. We have extensive experience with pylons assembly, alignment of the aforesaid, SCEs alignment and pipes support.

MMYPEM covers a wide range of specific services based on customer needs with regards to mechanical assembly and pipes and equipment installation such as: Blow-down Spool Installation (blowing tree); systems preparation for air blowing, including changeovers; manufacture of minor pipes (drains and vents); fitting of platforms and rails; pipe repairs and plant final works and adjustments.



CENTRAL COMBINED CYCLE.

WORKS

C.T.C.C. Hadera

Central Combined Cycle - 2017

Mechanical BOP Assembly, Pipe and equipment

Contractor: Seridom

Customer: Seridom

C.C.G.T. Bremen

Central Combined Cycle - 2013

Mechanical

Contractor: GE Wind Energy

Customer: Erzeugung GmbH Co.

CTCC Great Island Co

Central Combined Cycle - 2013

Mechanical Assembly

Contractor: UTE Dragados-Cobra-Initec

Customer: SSE

C.T.C.C. Port de Barcelona

Central Combined Cycle - 2009

Mechanical

Contractor: Técnicas Reunidas

Customer: Gas Natural

C.T.C.C. As Pontes

Central Combined Cycle - 2007

Equipment - Pumps auxiliary water plant

Contractor: Endesa S.A

Customer: Endesa S.A

C.T.C.C. Plana del Vent

Central Combined Cycle - 2007

Mechanical - Blowing tree

Contractor: UTE Técnicas Reunidas-Ferrovial Agroman

Customer: Gas Natural

C.T.C.C. Castelnou

Central Combined Cycle - 2004

Mechanical

Contractor: General Electric International Inc.

Customer: General Electric International Inc.

C.C. Son Reus 1ª Fase

Central Combined Cycle - 2000

Equipos - Grupo bombeo y tuberías NOX

Contractor: Endesa, S.A.

Customer: GESA-Endesa S.A.



SOLAR THERMAL PLANT.

WORKS

C.T.S. Ashalim.

Solar Thermal Plant - 2017

Pipe assembly

Customer: TSK Group

CTS Kathu

Solar Thermal Plant - 2017

Assembly of steam turbine and rotating equipments

Contractor: Liciastar (Pty) LTD (ACCIONA-SENER)

Customer: Kathu Solar Park (Pty) LTD

C.T.S. Shagaya

Solar Thermal Plant - 2016

Assembly of turbine and rotating equipment.

Contractor: TSK Group

Customer: KISR

C.T.S. Shagaya

Solar Thermal Plant - 2016

Assembly of solar fields, alignment of pylons and SCEs

Contractor: TSK Group

Customer: KISR

CTS Arenales

Solar Thermal Plant - 2013

Mechanical Assembly

Contractor: Ecolaire España, S.L.

Customer: Arenales Solar PS (OHL-Solar Millenium- RREEF Infrastructure)

CTS Extresol 1

Solar Thermal Plant - 2009

Solar fields

Contractor: UTE Cobra-Sener

Customer: EYRA

CTS Solnova 1

Solar Thermal Plant - 2009

Mechanical and turbine assembly

Contractor: Abener

Customer: Abengoa

CTS Andasol 2

Solar Thermal Plant - 2008

Contractor: UTE Cobra-Sener

Customer: EYRA

CTS PS20 Sanlúcar la Mayor

Solar Thermal Plant - 2008

Mechanical assembly and turbine assembly

Contractor: Franco Tosi

Customer: Abengoa

CTS Andasol 1

Solar Thermal Plant - 2007

Solar fields

Contractor: UTE Cobra-Sener

Customer: EYRA

BIOMASS.

WORKS

Biomass Plant Cubillos del Sil

Biomass Plant - 2019

Contractor: Acciona Industrial

Customer: Bioenergía del Noroeste SLU (Forestalia)

Biomass Plant Curtis-Teixeiro

Biomass Plant - 2019

Turbine assembly

Contractor: UTE Imasa-Acciona Industrial.

Customer: GREENALIA.



THERMAL POWER PLANT.

WORKS

C.D. de Ceuta

Thermal Power Plant - 2007

Equipment - House pumps

Contractor: Endesa S.A

Customer: Endesa S.A

Desulfurization of C.T. Andorra

Thermal Power Plant - 1999

Equipment - Refrigeration pipe

Contractor: Endesa U.P.O.M.

Customer: Endesa S.A.



MAINTENANCE AND OVERHAUL.

MMYPEM has broad international experience, as well as a highly qualified team in regards to providing maintenance and overhaul services on industrial plants both, comprehensive, preventive, corrective, modification and warranty.

Turbines

MMYPEM has an extensive experience on maintenance and overhaul of gas and steam turbines, as well as those in relation to the overhaul of bearings, blades, lubrication systems, seals, etc.

Diesel Engine Plants

MMYPEM has broad experience on comprehensive maintenance and overhaul of diesel engines. Among its activities, it needs to be highlighted the disassembly of cylinder heads and pistons, crankshaft bearings and connecting rods, distribution overhaul, alternator and all auxiliary equipment.

Hydraulic Power Plants

MMYPEM has proven track record in maintenance and overhaul of all kind of hydraulic power plants Francis, Pelton and Kaplan.

Combined Cycle Plants

MMYPEM has extensive experience on comprehensive maintenance of combined cycles (turbines, BOP, HRSG), as well as scheduled overhauls and auxiliary systems.

Thermosolar Plants

MMYPEM has wide experience on comprehensive maintenance of thermosolars (BOP, Turbine, HTF, Salts and Solar Field), as well as scheduled overhauls (HTF System Drainage, Turbines, PSV Pumps, among others).

Regasification Plants

Due to MMYPEM's proven track record on maintenance and overhaul of any kind of Installations of Liquefied Natural Gas or Stations of Regulation and Measurement, MMYPEM is able to provide services with regard to questions of preventive nature, guarantee, as well as in cases of incidence and corrective actions.



DIESEL.

WORKS

Transmediterránea (Almería)

Diesel Plants -

Diesel Engine

Contractor: Caldererías Indálicas.

Customer: Transmediterránea

Navia de Suarna (Asturias)

Diesel Plants -

Diesel Engine

Contractor: Man

Customer: Reni Picot

C.D. Ceuta

Diesel Plants - 5000 hours

Diesel Engine Gr. IX

Contractor: Endesa S.A.

Customer: Endesa S.A.

C. D Ceuta

Diesel Plants - 12000 hours

Diesel Engine Gr. IX

Contractor: Endesa S.A.

Customer: Endesa S.A.

C. D Ceuta

Diesel Plants - 24000 hours

Diesel Engine Gr. IX

Contractor: Endesa S.A.

Customer: Endesa S.A.

Grupo IX C.D. Ceuta

Diesel Plants - 24M/12M/5M hours

Diesel Engines Maintenance&Overhaul

Contractor: Endesa, S.A.

Customer: Endesa, S.A.

Diesel Engines Navia de Suarna

Diesel Plants -

Diesel Engines Maintenance&Overhaul

Contractor: Man

Customer: Reny Picot

Diesel engines Transmediterránea

Diesel Plants -

Diesel Engines Maintenance&Overhaul

Contractor: Caldererías Indálicas

Customer: Transmediterránea

THERMAL POWER PLANT.

WORKS

C.T. of Narcea

Thermal Power Plant - 2002

Maintenance&Overhaul, Turbine maintenance

Contractor: Mompresa

Customer: Gas Natural – Unión Fenosa.

C.T. Aboño

Thermal Power Plant - 2002

Turbine maintenance, Maintenance&Overhaul

Contractor: Mompresa

Customer: Hierros del Cantábrico

C.T. Sabón Gr. I y II

Thermal Power Plant - 2001 - 2002

Turbine Maintenance, Maintenance&Overhaul

Contractor: Mompresa

Customer: Gas Natural – Unión Fenosa

C.T. Tirme Incinerator Son Reus

Thermal Power Plant - 2002

Turbine maintenance, Maintenance&Overhaul

Contractor: Mompresa

Customer: Tirme

C.T. Andorra

Thermal Power Plant - 2000

Turbine Maintenance, Maintenance&Overhaul

Contractor: Mompresa

Customer: Endesa S.A.



CENTRAL COMBINED CYCLE.

WORKS

C.T.C.C. Wloclawek

Central Combined Cycle - 2017

Overhaul

Contractor: General Electric y SNC Lavalin

Customer: PKN ORLEN

C.T.C.C. Mittelsbueren

Central Combined Cycle - 2017

Overhaul

Contractor: GE POWER

Customer: Erzeugung GmbH Co.

C.T.C.C. Port de Barcelona

Central Combined Cycle - 2010 - 2012

Maintenance&Overhaul

Contractor: General Electric International Inc.

Customer: Gas Natural

C.T.C.C. As Pontes

Central Combined Cycle - 2007 - 2012

Comprehensive

Contractor: UTE Mantenimiento Integral CTCC As Pontes

Customer: Endesa Generación

C.T.C.C. Sagunto

Central Combined Cycle - 2007 - 2011

Warranty maintenance

Contractor: Siemens S.A

Customer: Gas Natural - Unión Fenosa

C.T.C.C. Palos de la Frontera

Central Combined Cycle - 2005 - 2007

Warranty - Turbines, Maintenance&Overhaul

Contractor: Siemens, S.A.

Customer: Gas Natural - Unión Fenosa

C.T.C.C. Campo Gibraltar Gr. X y XI

Central Combined Cycle - 2004 - 2006

Turbine maintenance, Maintenance & Overhaul

Contractor: Siemens S.A.

Customer: N.G.S.

C.T.C.C. Arrúbal

Central Combined Cycle - 2005 - 2007

Warranty - Turbines, Maintenance & Overhaul

Contractor: Siemens S.A.

Customer: Gas Natural



REGASIFICATION.

WORKS

Regasification plant of Sagunto

Central Regasification - 2007 - 2012

E.S.R. / Comprehensive

Contractor: Regasagunto UTE

Customer: Saggas

MAINTENANCE AND OVERHAUL.

HYDRAULIC POWER PLANT.

WORKS

CH Biescas 2

Hydraulic Power Plant - 2016

Hydraulic Plant Revision

Contractor: Acciona

Customer: Acciona

CH Frieira

Hydraulic Power Plant - 2007

Hydraulic Plant Revision

Contractor: Alstom Hydro España S.L

Customer: UNION FENOSA GENERACION S.A.



SOLAR THERMAL PLANT.

WORKS

C.T.S. Ashalim Plot A

Solar Thermal Plant - 2019

Contratista: Negev Energy

Cliente: Negev Energy

C.T.S. Majadas

Solar Thermal Plant - 2017

Overhaul

Contractor: Nextera

Customer: ACCIONA Energía

C.T.S. Shagaya

Solar Thermal Plant -

Contractor: TSK Group

Customer: KISR

CTS Termosol 1

Solar Thermal Plant - 2015

HTF Emptying

Contractor: NextEra

Customer: NextEra

CTS Termosol 2

Solar Thermal Plant - 2015

HTF Emptying

Contractor: NextEra

Customer: NextEra

CTS La Africana

Solar Thermal Plant - 2012 - 2016

Maintenance&Overhaul

Contractor: Ormats Mantenimiento Integral S.L.

Customer: Ormats Mantenimiento Integral S.L.

CTS Olivenza 1

Solar Thermal Plant - 2012

Warranty maintenance

Contractor: UTE Olivenza (Acciona Infraestructuras/Ingeniería - Seridom)

Customer: Ibereólica

CTS Valle 1

Solar Thermal Plant - 2011

Maintenance Operations

Contractor: UTE Cobra-Sener

Customer: Torresol Energy

CTS La Dehesa

Solar Thermal Plant - 2011 - 2015

Contractor: Samcasol (TSK-MAESSA)

Customer: Samcasol

CTS La Florida

Solar Thermal Plant - 2011 - 2015

Maintenance&Overhaul

Contractor: Renovables Samca, S.A.

Customer: Renovables Samca, S.A.

SUPERVISIONS.

Given its long history in the sector, MMYPEM offers specific mechanical supervision services regarding pre-commissioning works on pipes and rotatory equipment, as well as the mechanical supervision during the commissioning stage of the aforesaid.

MECHANICAL

MMYPEM has wide experience on the mechanical supervision of any type of industrial plants.

SALTS MELTING

Given its experience on thermosolar plants, MMYPEM has consolidated itself in the provision of salt melting supervision services.



PETROCHEMICAL.

WORKS

Aegean Refinery Project (ARP) of Turkey

PetroChemical Plant - 2018

Mechanical supervision

Contractor: TSGI (TSGI Mühendislik İnşaat Limited Şirket)

Customer: State Oil Company of Azerbaijan Republic (SOCAR)

Normandy Refinery

PetroChemical Plant - 2014

Mechanical

Contractor: Técnicas Reunidas, S.A.

Customer: Total

Refinery Elefsis

PetroChemical Plant - 2011

Mechanical

Contractor: Técnicas Reunidas

Customer: Hellenic Petroleum

PetroChemical Plant of Kayan

PetroChemical Plant - 2009

Mechanical

Contractor: Técnicas Reunidas

Customer: Saudi ARAMCO

PetroChemical Plant of Rabigh

PetroChemical Plant - 2008

Mechanical supervision

Contractor: Técnicas Reunidas

Customer: Saudi ARAMCO



CENTRAL COMBINED CYCLE.

WORKS

CC Manifah

Central Combined Cycle - 2015

Mechanical supervision

Contractor: Técnicas Reunidas

Customer: Saudi ARAMCO

CCPP Sugres

Central Combined Cycle - 2010

Mechanical supervision

Contractor: Iberdrola

Customer: OGK-5



SOLAR THERMAL PLANT.

WORKS

CTS Andasol 3

Solar Thermal Plant - 2011

Salts Melting

Contractor: UTE Andasol 3 (Ferrostaal - Duro Felguera)

Customer: Marquesado Solar

REGASIFICATION.

WORKS

Zeebrugge LNG Terminal

Central Regasification - 2019

Contratista: Felguera IHI, SA

Cliente: Fluxys LNG SA

TECNICAL ADVICE.

As a result of our broad international experience in providing services for industrial plants and involving our highly qualified staff, MMYPEM offers comprehensive solutions on technical consulting issues, focused on the optimization of resources, related both to facilities and personnel, as well as the reduction of risk of unavailability and damage to equipment, and those aimed at reducing operating and maintenance costs

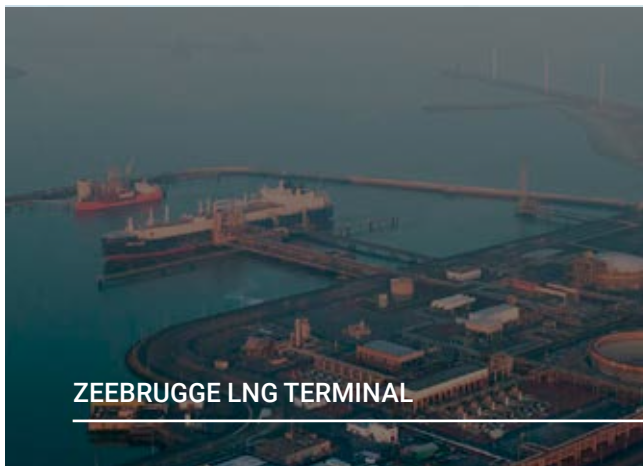




REFERENCES.

MMYPEM

MAIN PROJECTS.



MAIN PROJECTS.



MAIN PROJECTS.



C.T.C.C. AS PONTES (A CORUÑA)



C.T.S ASHALIM



C.C.C DEAD SEA WORKS



C.T.C.C. PALOS DE LA FRONTERA (HUELVA)



GROUP VII, VIII AND IX C.D. LAS SALINAS



GROUP XIII, XIV AND XV C.D. LOS GUINCHOS.

MAIN PROJECTS.



C.T.C.C. CRISTÓBAL COLÓN IN HUELVA



BIOMASS HUELVA PLANT



1ST AND 2ND PHASE C.T.C.C. GRANADILLA



C.T.C.C. BESÓS V (BARCELONA)



C.T.C.C. PORT DE BARCELONA



GROUP XIX AND XX C.D. IBIZA (BALEARES)

CUSTOMERS.



A grayscale photograph of an industrial refinery or chemical plant. The background is filled with complex structures including tall distillation columns, a network of pipes, and multiple levels of metal walkways and ladders. In the lower right foreground, two workers are visible, wearing blue protective suits, white hard hats, and safety glasses. One worker is looking down at something in his hands, while the other is looking towards the camera. The overall atmosphere is industrial and professional.

CONTACT.

MMYPEM

HEADQUARTERS.

Our origins are in As Pontes – A Coruña – Spain, and there is where our HEADQUARTERS are located, place where we give response to all the work related needs from clients and collaborators raise to us at a global level.

From there we coordinate the logistics for the sake of an smooth projects development of projects, aimed at integrating all our capabilities and teams in a single direction: effectiveness and efficiency in our solutions.

ADDRESS:

Pol. Ind. Os Airios Sec 2 Parc 15B,
15320 As Pontes de Garcia Rodriguez, A CORUÑA, (Spain).

OPENING HOURS:

Lu-Vi: 9:00-18:00

Tel: +34 981 450 861

Fax: +34 981 450 489

